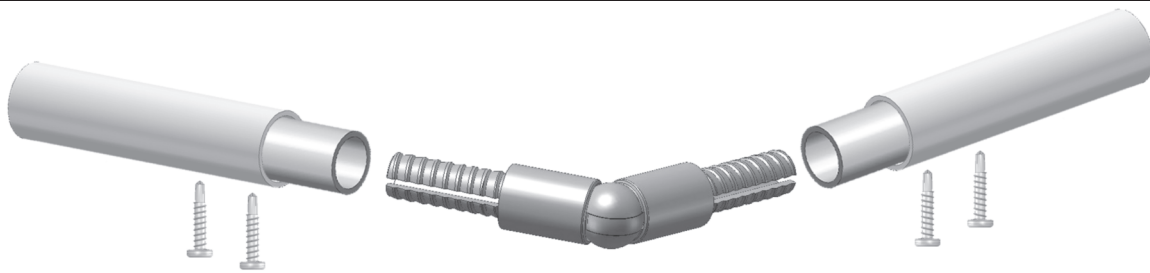


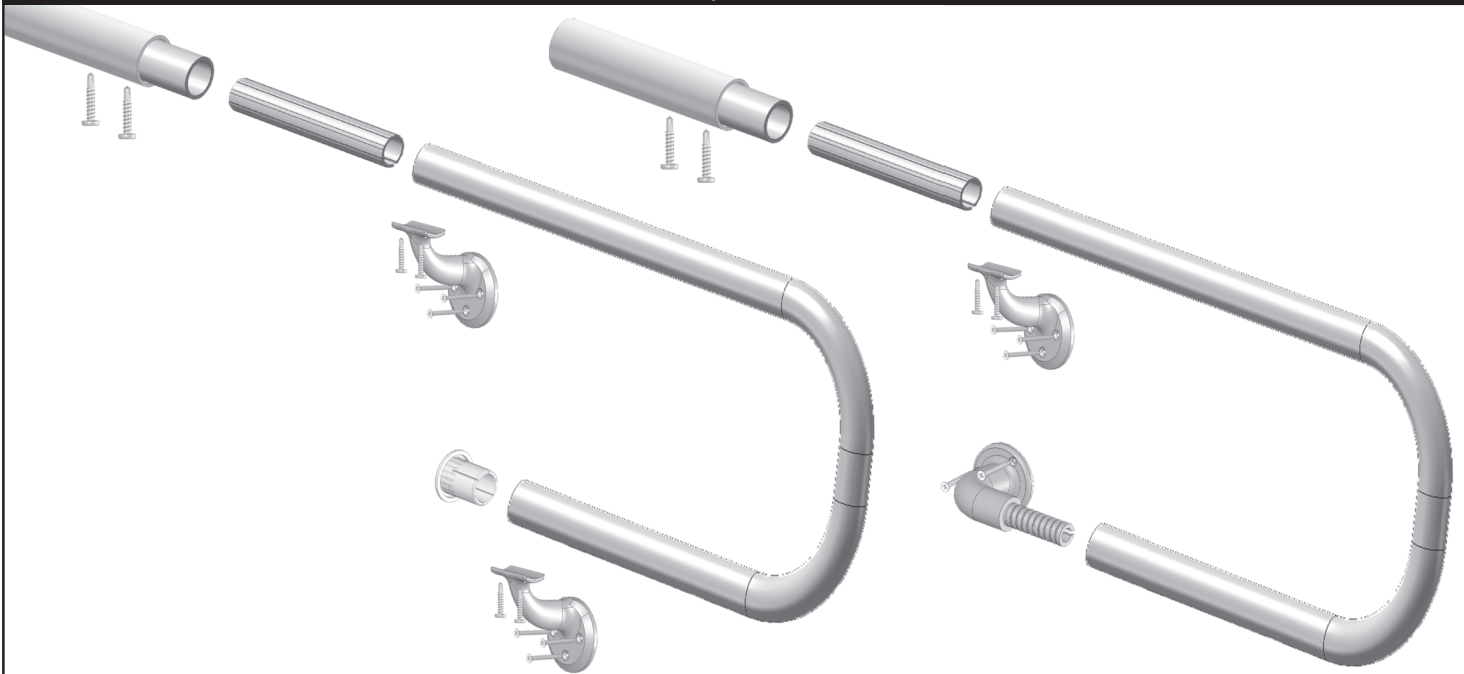
External Swivel - 0 to 60°



External Swivel Used for Step Degree Angles

- Adjust external swivel to desired angle and install set screw.
- Cut ADA tube with aluminum to desired length.
- Insert external swivel bracket into the ADA tube.
- Pre drill aluminum reinforced ADA tube and bracket with drill bit and install self tapping screw provided.

P-Loop Return



P-Loop Return is Used at the Bottom of Steps or Handicap Ramps

- Attach top bracket at desired location using appropriate connectors.
- Cut P-Loop to desired length.
- Connect P-Loop to ADA tube using the appropriate connector (Straight, Adjustable connector or External swivel).
- Set P-Loop on top bracket and Pre drill with drill bit and install self tapping screw provided.
- Install desired lower bracket.

Typical ADA Railing Installation

Components:

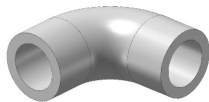
1 ADA Hand Rail w/Aluminum



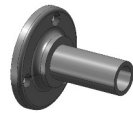
2 6" Straight Joiner



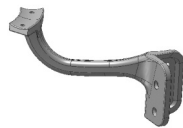
3 4" Inside/Outside Corner



4 Straight End Wall Bracket



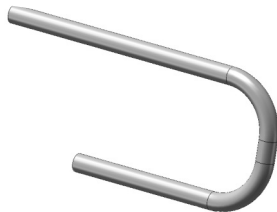
5 Inside Corner Bracket



6 End Cap



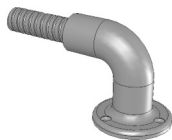
7 P-Loop Return



8 6" Adjustable Joiner



9 90° Quick Return Bracket



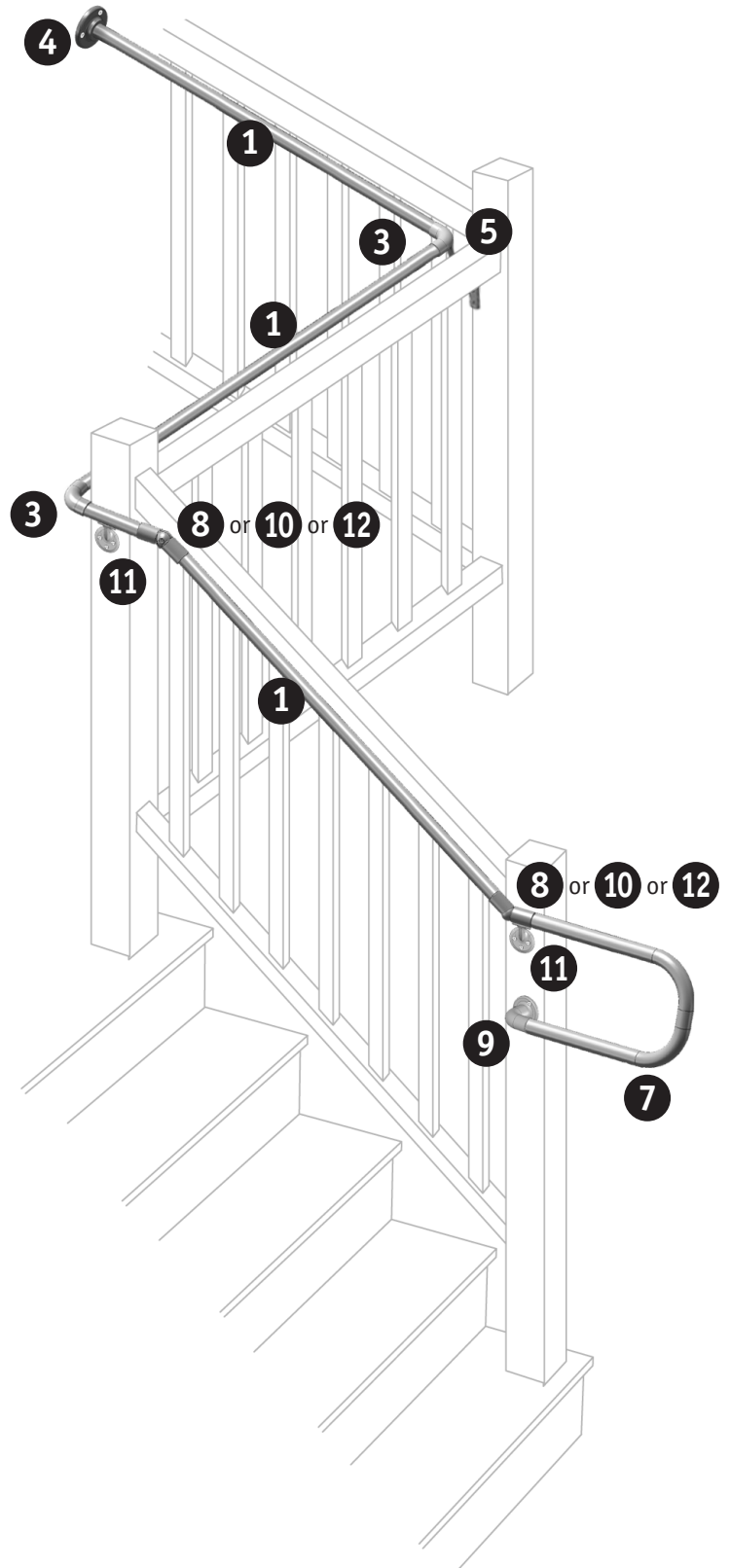
10 External Swivel



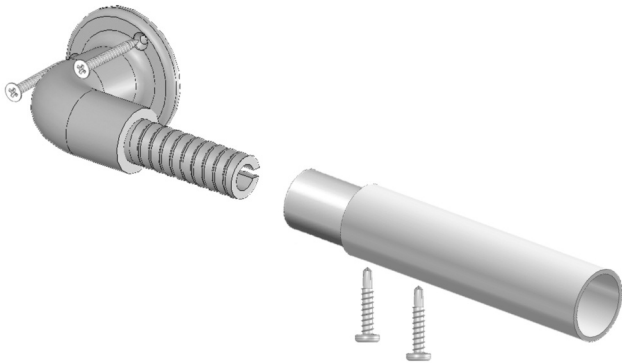
11 Stand Off Bracket



12 5°, 32°, or 38° Radius Elbow



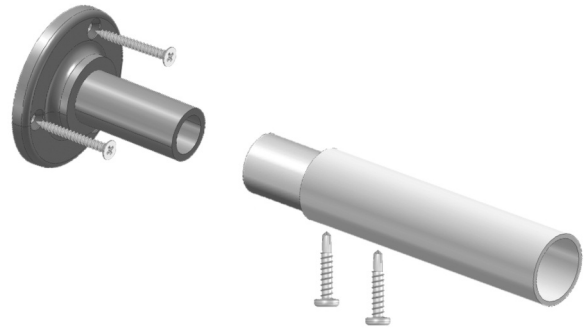
90° Quick Return Bracket



90 Degree Bracket Used for Both Post and Wall Returns

- Cut ADA tube with aluminum to desired length.
- Insert 90 degree bracket into the ADA tube.
- Install counter sunk screws provided through the bracket.
- Pre-drill aluminum reinforced tube and bracket with drill bit and install self tapping screw provided.

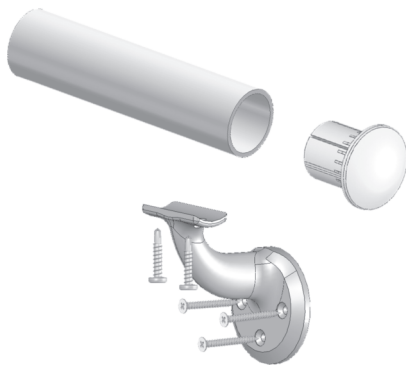
Straight End Wall Bracket



Inline Wall Mount Used for Straight Wall Connections

- Cut ADA tube with aluminum to desired length.
- Insert 90 degree bracket into the ADA tube.
- Install counter sunk screws provided through the bracket.
- Pre-drill aluminum reinforced tube and bracket with drill bit and install self tapping screw provided.

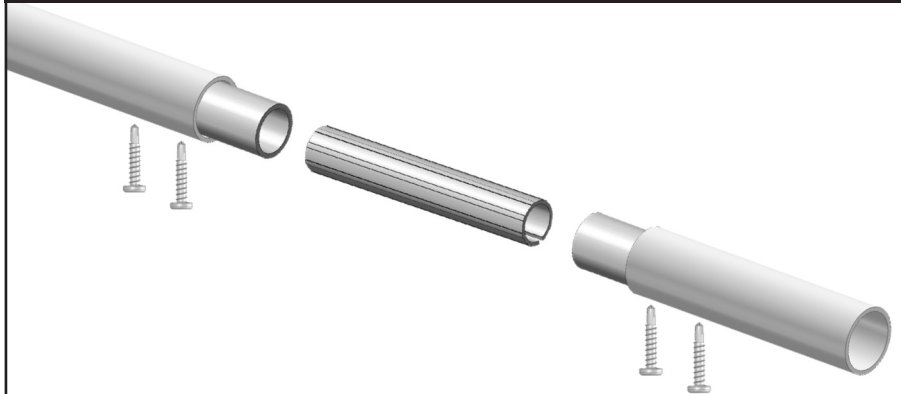
Stand Off Bracket



Standoff Bracket Used for Rail Applications on Walls or Posts

- Install counter sunk screws provided through the bracket into the mounting surface.
- Place rail at appropriate location on the bracket.
- Pre-drill aluminum reinforced ADA tube with drill bit and install self tapping screw provided.
- Place end cap on rail.

6" Straight Joiner



Internal 6" Straight Joiner Used to Connect 2 ADA Tubes or 4" Inside/Outside Corner

- Cut ADA tube with aluminum to desired length.
- Pre drill aluminum reinforced ADA tube and joiner with drill bit and install self tapping screw provided.

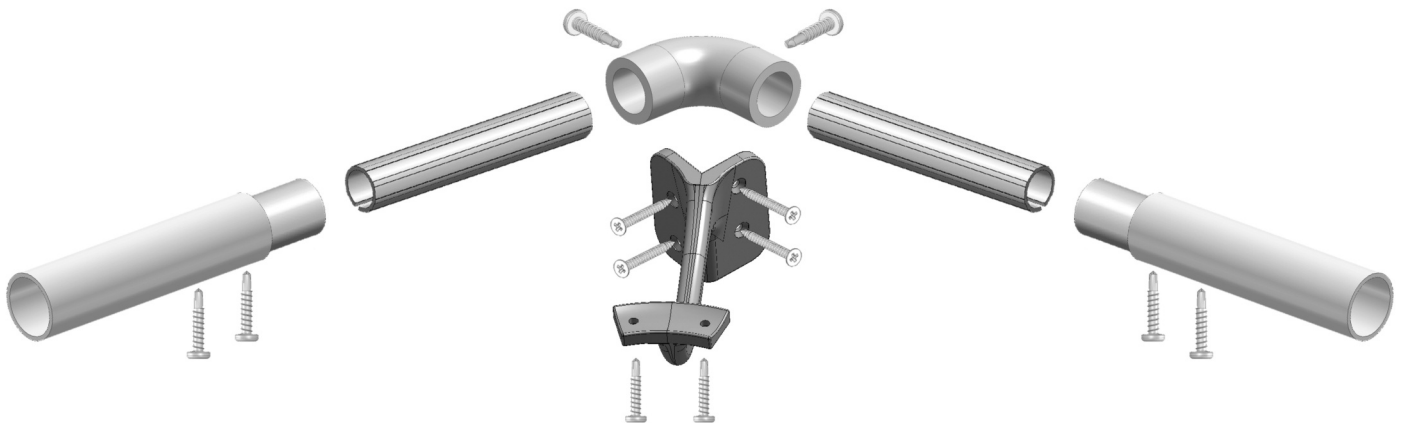
6" Adjustable Joiner - 0 to 90°



Internal 6" Adjustable Joiner Used for Degree Angles

- a) Miter cut ADA tube and with aluminum to desired length.
- b) Install adjustable joiner inside both ends of the tube.
- b) Pre drill 90 degree corner and straight joiner with drill bit and install self tapping screw provided.

4" Inside/Outside Corner with Corner Bracket



4" Corner Can Be Used for Both Inside and Outside Corners

- a) Install 2 straight joiners into the 90 degree corner.
- b) Pre drill 90 degree corner and straight joiner with drill bit and install self tapping screw provided.
- c) Cut ADA tube with aluminum to desired length.
- d) Pre drill aluminum reinforced ADA tube and joiner with drill bit and install self tapping screw provided.

Inside Corner Bracket

Inside Corner Stand Off Bracket Used with 90° Elbow for Inside Corner Applications

- a) Install counter sunk screws provided through the bracket into the mounting surface (corner of post).
- b) Place 90 degree corner at appropriate location on the bracket.
- c) Pre drill 90 degree with drill bit and install self tapping screw provided.